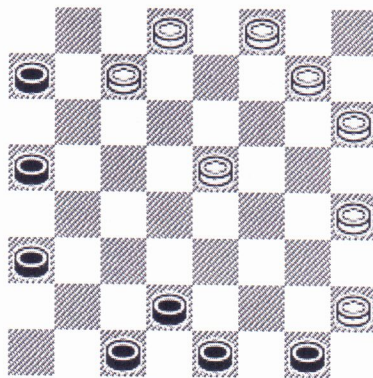


GAME 34 [Black "Alex Moiseyev"] [White "Michele Borghetti"]

9-14 22-17 11-15 25-22 8-11 17-13 11-16 29-25 16-20 24-19 15x24 28x19 4-8 22-17 **(A)** 14-18 **(B)** 23x14 8-11 26-23 11-15 **(C)** 32-28 15x24 28x19 5-9 14x5 10-14 17x10 6x24 23-18 24-28 {see diagram} 18-14 **(D)** 28-32 31-26 **(E)** 32x23 26x19 20-24 14-9 24-27 25-22 27-31 19-15 **(F)** 31-27 22-17 27-23 15-10 7x14 17x10 2-7 **(G) Draw**



White to play

(A) Varies from 22-18 in Games 5, 6.

(B) 8-11 25-22 11-16 22-18 7-11 is a familiar Pioneer landing that I like for black, but white may play 19-16 instead of 25-22. Ryan & Wiswell's *World Championship Checkers* p. 62 says about Alex's 14-18, "Safest course: made to avoid 8-11 19-16 and complications favoring white." But Moiseyev's *Sixth* later says that 8-11 appear to be safest way, giving black some edge after 19-16 12-19 23-16 14-18. See *Sixth* SG-38 note F.

(C) 11-16 14-9 5-14 25-22 is Holmes-Moiseyev in *Sixth* SG-38 and into the same familiar Pioneer landing mentioned at start of note B, but here the move is different, so landing is colors-reversed!

(D) 18-15 28-32 31-26 32-23 26-19 20-24 21-17 24-27 13-9 27-31 17-13 31-27 9-6 is *Solid Checkers* V. 15.

(E) 27-23 draw, A. Heffner - A. Hynd, 1905 IM (JL) G. 390. This is also Reisman's *Pioneer System* V. 50

(F) 22-18 31-27 18-15 12-16 (or 27-23 19-16 12-19 9-6 Draws, Denvir) 19-12 27-23 21-17 23-18 30-25 18-11 9-6 (25-21 first loses by 7-10) 1-10 25-21 11-15 17-14 10-17 21-14 15-10 14-9 10-6 5-1 7-10 1-5 6-1 12-8 3-12 9-6 2-9 5-7 is a different-looking draw, *Elam's Checker Board* G. 6900.

(G) J. Morrison - E. Lowder, 1987 GAYP Nat. (JL)